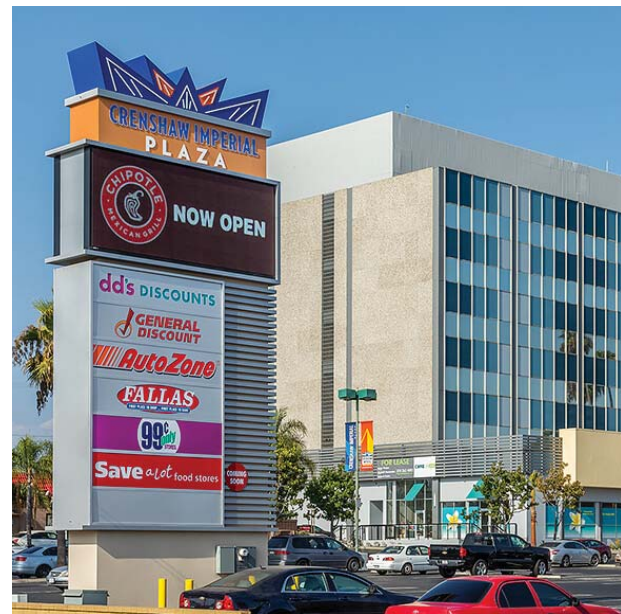


CRENSHAW/IMPERIAL

Transit Oriented Development Plan and Design Guidelines

INGLEWOOD, CA



City Council

James T. Butts, Mayor
George Dotson
Alex Padilla
Eloy Morales, Jr.
Ralph L. Franklin

Planning Commission

Larry Springs, Chair
Aide Trejo
Terry Coleman
David Rice
Erick Holly

City Staff

Artie Fields, City Manager
Christopher Jackson, Senior Economic and Community
Development Department Manager
Mindala Wilcox, Planning Manager
Fred Jackson, Senior Planner
Arturo Salazar, Assistant Planner

Photo Credits

Crenshaw/Imperial Plaza /
NewMark Merrill (cover, top center)

Plan Consultants

The Arroyo Group
with
Stanley R. Hoffman Associates
Iteris, Inc.
JMC²
Productivity Consulting
Metis Environmental Group

Public Outreach Venues

Faithful Central Bible Church
U.S. Veterans Initiative/
Cloudbreak Communities
Airport Plaza Shopping Center
Inglewood Public Library

Stakeholders Advisory Committee

Councilman Ralph Franklin
Councilman Eloy Morales, Jr.
Planning Commissioner Aide Trejo
Planning Commissioner/Chamber of Commerce
President Erick Holly
Maxine Toler, Around the Block Club
Anne La Rose, Inglewood Historic Preservation Alliance
Marc Little, Faithful Central Bible Church
Peter Postmayer, Cloudbreak Communities
Zach Norman, Local Business Owner
Maria Smietan, Alliance
Jim Patton, Newmark Merrill

TABLE OF CONTENTS

Chapter 1: Citywide Overview	2	Chapter 3: Concept Plan	8	Chapter 5: Development Standards and Design Guidelines	24	Chapter 6: Implementation Action Plan	42
1.1 New Potentials from Metro.....	2	3.1 TOD Plan Area Urban Design Districts.....	8	5.1 Purpose and Applicability.....	24	6.1 Introduction.....	42
1.2 Citywide TOD Framework.....	2	3.2 Urban Design Framework.....	10	5.2 Interpretation.....	24	6.2 Establish a Stakeholders Action Plan Implementation Committee.....	42
Chapter 2: Plan Overview	4	3.3 Street Trees.....	14	5.3 Development Standards and Guidelines Not Listed.....	24	6.3 Update the City’s Capital Improvement Program.....	42
2.1 TOD Plan Area.....	4	3.4 Arts Framework.....	14	5.4 Site Plan Review.....	24	6.4 Pursue Regional, State and Federal Infrastructure Funding Sources.....	42
2.2 Legal Factors.....	4	3.5 Sustainability.....	16	5.5 Design Review.....	24	6.5 Establish a Property-Based Business Improvement District for the Planning Area and Develop a Marketing Program.....	43
2.3 Purpose.....	4	3.6 Equity and Public Benefit.....	17	5.6 Development Standards.....	24	6.6 Create a Range of Market Racte and Affordable Housing Units.....	43
2.4 Planning and Decision-Making Process.....	5	Chapter 4: Zoning	18	5.7 Development Incentives.....	24	6.7 Solicit Crenshaw Boulevard/I-105 Freeway On-Ramp Redesign from Caltrans.....	45
2.5 LAX Development.....	5	4.1 Introduction.....	18	5.8 Design Guidelines Framework.....	26	6.8 Support Job Opportunities for Inglewood Residents.....	46
2.6 Overview of Potentials and Needs.....	6	4.2 Zoning Districts.....	18	5.9 Gateway Center Design Standards.....	27	6.9 Establish an Enhanced Infastructure Financing District for the Planning Area.....	46
2.7 TOD Plan Vision.....	6	4.4 Permitted and Prohibited Uses.....	18	5.10 Southeast Corner.....	28	6.10 Update the Development Impact Fee (DIF) Schedule for the Planning Area.....	47
		4.5 Land Uses Not Listed.....	18	5.11 Southwest Corner.....	30	6.11 Submit Grant Applications for the Crenshaw Green Boulevard.....	47
		4.6 Interpretation.....	18	5.12 Northeast Corner.....	32	6.12 Study Creating and Extending Local Historic Designation to Brolly Hut.....	47
		4.7 Non-Conforming Uses.....	20	5.13 Street Frontages Standards for New Zoning Districts.....	34	6.13 Brand Area with Signage and Streetscape Improvements.....	47
		4.8 Special Use Permits.....	20	5.14 Mixed-Use and Multi-Family Residential Design Guidelines.....	36	6.1 Monitor Fiscal Performance of Increase in TOD Plan Area Public Revenues.....	47
		4.9 Variances.....	20	5.15 Signage Guidelines.....	40		
		4.10 Change of Zoning Regulations.....	20	5.16 Low-Density Residential Edge Conditions.....	41	Appendix A: Form-Based Building Prototypes	48
		4.11 Planned Assembly Developments.....	20			A.1 Introduction.....	48
						A.2 Applicability.....	48
						A.3 Interpretation.....	48
						A.4 Prototype Selection Considerations.....	48
						A.5 Parking and Driveway Guidelines.....	48
						A.6 Setbacks for Prototypes.....	48
						A.7 Undesirable Prototypes.....	53

LIST OF FIGURES

Chapter 1: Citywide Overview

1.1 Future Metro System Connections 2
 1.2 Stakeholder Comments 3
 1.3 City of Inglewood TOD Plan Framework 3

Chapter 2: Plan Overview

2.1 Crenshaw/Imperial Planning Area..... 4
 2.2 Planning and Decision-Making Process 5
 2.3 Stakeholder/Community Outreach Photos 6

Chapter 3: Concept Plan

3.1 Districts..... 9
 3.2 Urban Design Framework 11
 3.3 Reconfigured Freeway On-Ramp and Gateway Park..... 12
 3.4 Crenshaw Boulevard Cross-Section 13
 3.5 Recommended Street Trees 14
 3.6 Arts Framework 15
 3.7 Sustainability 17

Chapter 4: Zoning

4.1 Zoning Districts 19
 4.3 Permitted and Prohibited Uses 22-23

Chapter 5: Development Standards and Design Guidelines

5.1 Affordable Housing Density Bonus Table..... 24
 5.2 Development Standard Reductions or Waivers offered for Affordable Housing 24
 5.3 Parcel Consolidation Incentive Table..... 24
 5.3 Development Standards 25
 5.4 Design Guidelines 26
 5.5 Gateway Center Design Standards 27
 5.6 Southeast Corner Urban Design Framework 28
 5.7 Southeast Corner Macro Design Guidelines 29
 5.6 Southwest Corner Urban Design Framework 30
 5.7 Southwest Corner Macro Design Guidelines 31
 5.6 Northeast Corner Urban Design Framework 32
 5.7 Northeast Corner Macro Design Guidelines 33
 5.9 Frontage Type Applicability by Zone 34
 5.10 Surface Parking Design Standards 35
 5.11 Examples of Frontage Types 35
 5.12 Low-Density Residential Edge Guidelines Applicability Area 41
 5.13 Low-Density Residential Edge Conditions 41

Chapter 6: Implementation Action Plan

6.1 Implementation Action Plan Summary 42
 6.2 Capital Improvement Project Costs 43
 6.3 Capital Improvement Projects 43
 6.4 Potential Funding Sources for the Implementation Action Plan 44

APPENDIX A - FORM-BASED BUILDING PROTOTYPES

A.1 Prototype Applicability by Zone..... 46
 A.2 Features of Single Family Prototype..... 47
 A.3 Plan View of Single Family Prototype..... 47
 A.4 Features of 2- to 4-plex Prototype..... 47
 A.5 Plan View of 2- to 4-plex Prototype..... 47
 A.6 Features of Bungalow Court Prototype 48
 A.7 Plan View of Bungalow Court Prototype..... 48
 A.8 Features of Row House Prototype..... 48
 A.9 Plan View of Row House Prototype 48
 A.10 Features of Garden Court Prototype 49
 A.11 Plan View of Garden Court Prototype 49
 A.12 Features of Commercial Block Prototype 49
 A.13 Plan View of Commercial Block Prototype 49
 A.14 Features of Residential Edge Block Prototype .. 50
 A.15 Plan View of Residential Edge Block Prototype . 50
 A.16 Features of Residential Block Prototype..... 50
 A.17 Plan View of Residential Block Prototype..... 50
 A.18 Features of Undesirable Box Prototype..... 51